

Future and conditions for Municipal Fibre Networks -and the open network model

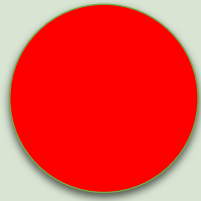
Hafsteinn Jonsson
hafsteinn@phaze.se
+46 708544500

Fibre based

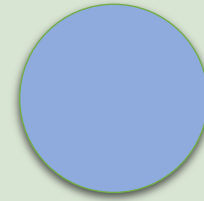
Open networks owned by municipalities



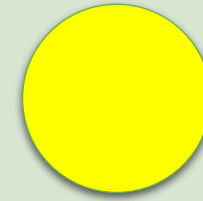
Why do they exist?



What is their contribution?



What is the debate about?

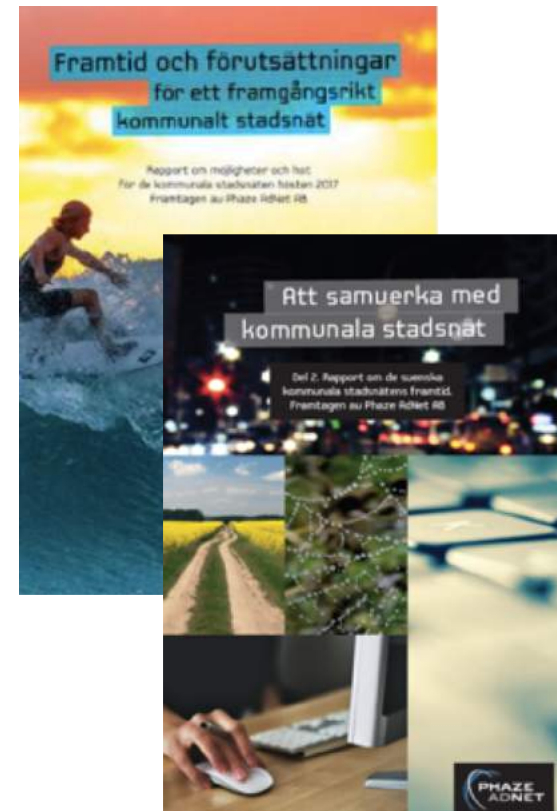


Do they have a future?

Based on research and studies

- Research by RISE/Acreo
- Studies by
 - European Union
 - Swedish Local Fibre Alliance (Svenska Stadsnätetsföreningen)
 - Swedish Association of Local Authorities and Regions (SKL)
 - Stokab (Stockholm City Fibre Network)

- Two own studies by Phaze AdNet:



1. Future and conditions for Municipal Fibre Networks (oct 2017)
2. Municipals Fibre Networks supplier chain (in one week)



10 years of heading Municipal Fibre Network in
Karlstad

CEO of MittNät

Today independent

Board member Netnod

29 years in telecom

“My name is Peter I want to order a 40 Gbit/s connection to my mother”

Fibre was not on the agenda only ten years ago

By beating the world record we wanted to make a statement for fibre networks



We will build fibre networks!

Municipal Fibre Network

The response:

“There will not be a time in human history where 56kbits/s for households and ISDN for companies is not sufficient”



Open network in the municipal fibre network

Municipal Fibre Network

The Response:

”No need! DSL is already regulated, and in most household you have both copper and coax.”



Offering fibre to apartments!

Municipal Fibre Network

The Response:

”But they have coax!”



Offering fibre to detached/terraced market!

Municipal Fibre Network

The Response:

“There is not and will never be a business case to support such a waste of resources.”



Offering fibre connections in rural areas

Municipal Fibre Network

Response:

“There is not and will never be a business case to support such a waste of resources.”



Offering 10 Gbit/s to
residential customers

Bahnhof

The Response:

“There is no customer request
for this.”

A blue, weathered sign with white text. The word "Sorry" is written in a cursive font, "WE'RE" is in a simple sans-serif font, and "CLOSED" is in a large, bold, blocky sans-serif font. The sign is slightly tilted and has a dark background behind it.

Service Providers in Karlstad open Municipal Fibre Network at the start

DATAREAL



Service Providers in Karlstad Open Municipal Fibre Network today





Due to Open Fibre Networks Infrastructures in Sweden there is:

- Lower prices for broadband services
 - Lithuania, Sweden, Latvia and Finland have the most attractive prices overall in EU.
- A lot of ISP's with high competition
- Possibility for all operators to have access to larger market with high speed broadband
- New Services and systems Developed at faster pace
- Better mobile coverage for 3G and 4g
- A well working and a unique market place
- A leading position in fibre deployment
 - Only one county in Europe has better coverage

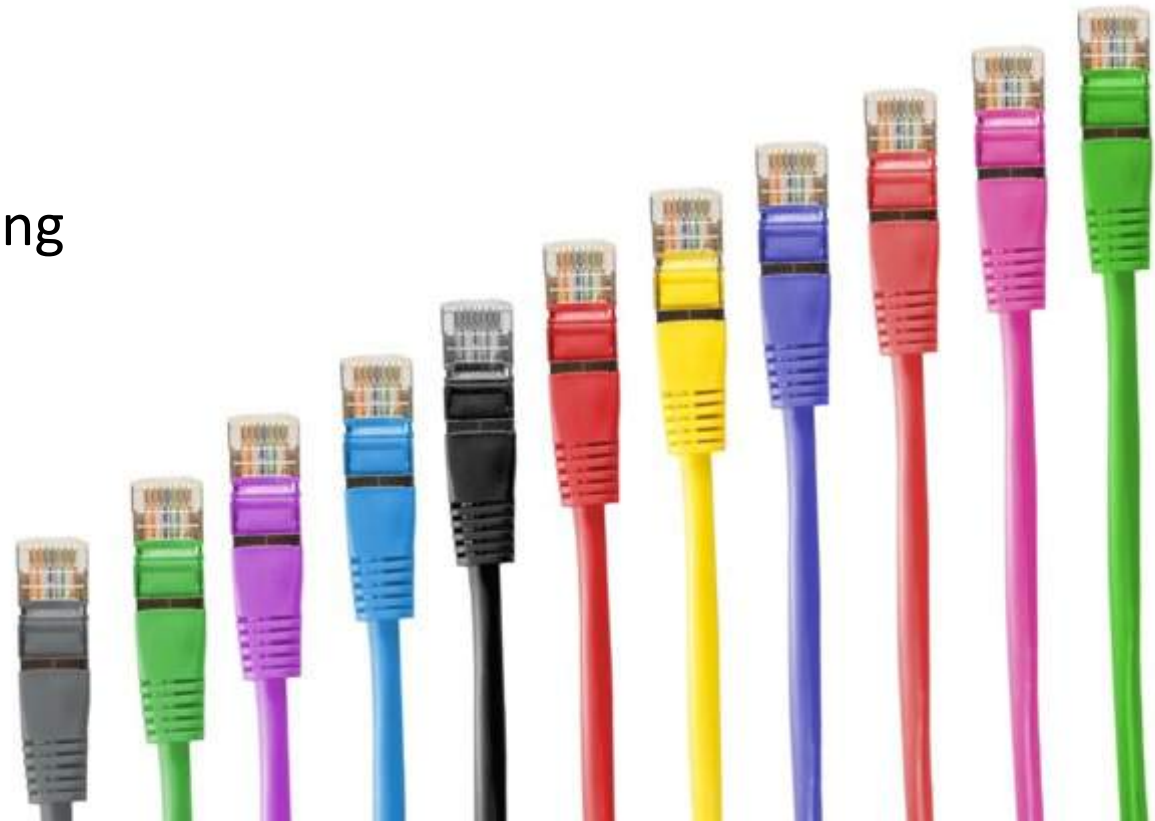
The alternative

Countries with no tradition of open infrastructure and where the incumbent still dominates have not had the same development in fibre based and high speed broadband.



If it works, why is there a debate?

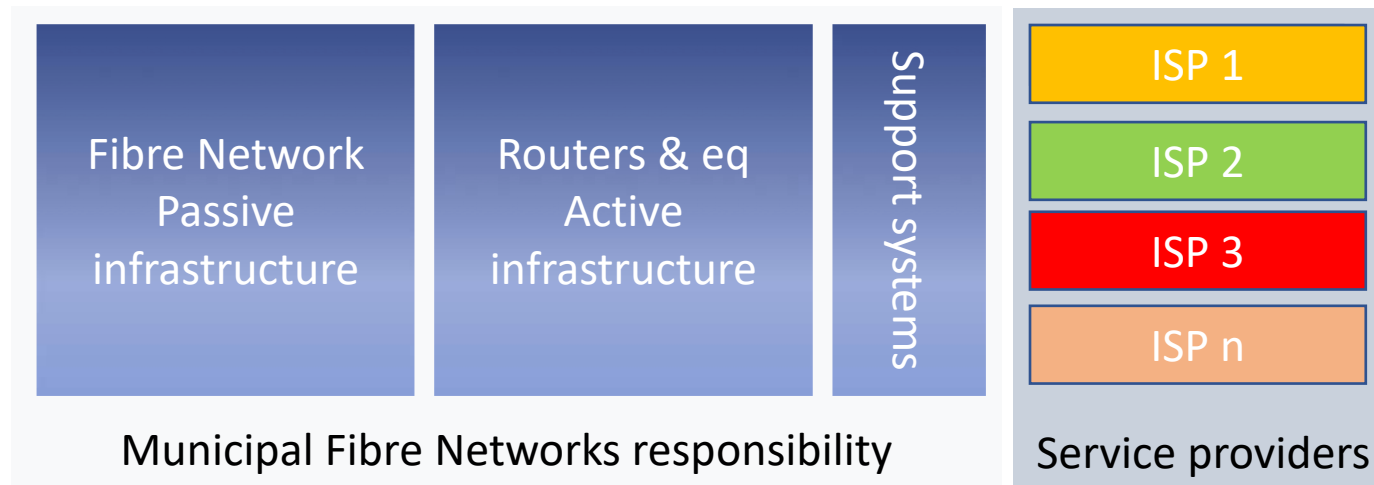
- Traditional Telco's are lobbying for restrictions for Municipal Fibre Networks
- Swedish authorities are investigating the role of municipal on the broadband market
- It is a risk that Municipal Fibre Networks will be limited to only operate the passive network



Open network operated by municipality

Open infrastructure on all levels

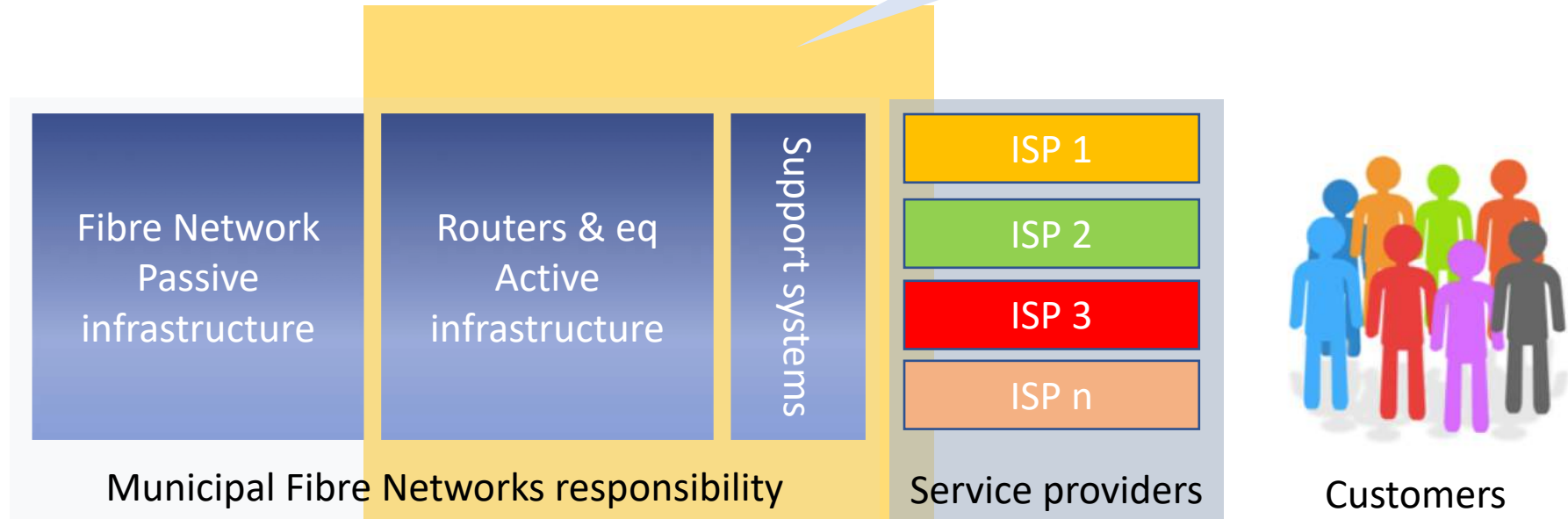
- ISP
- Capacity
- Dark Fibre



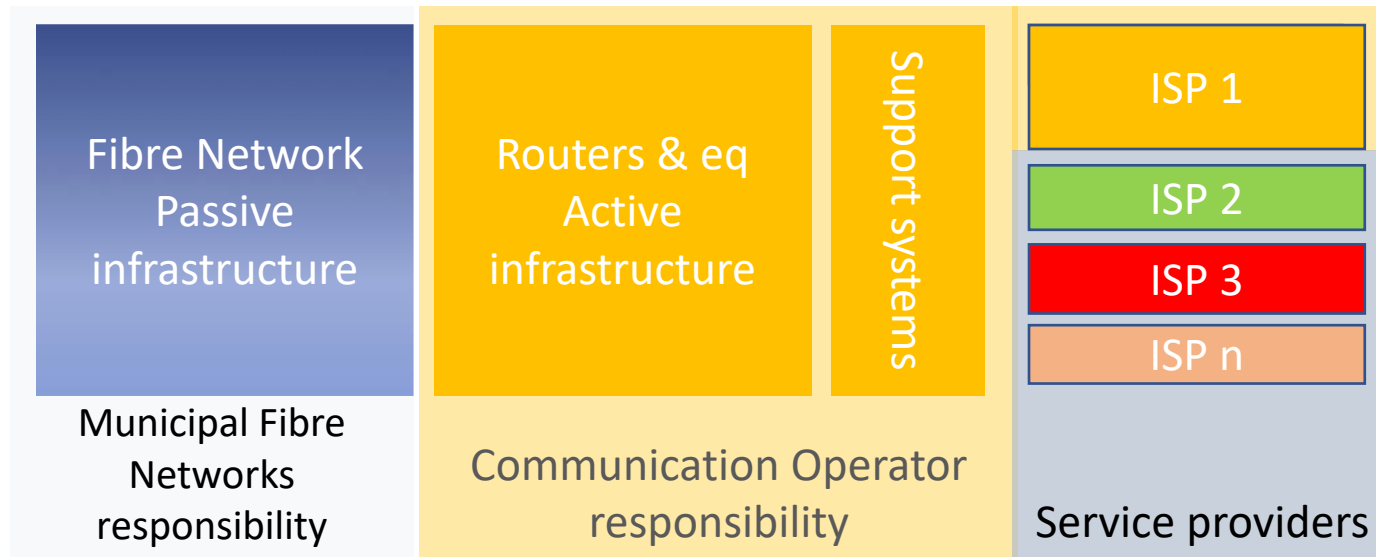
Customers

Communication operators

This is what communication operators are addressing



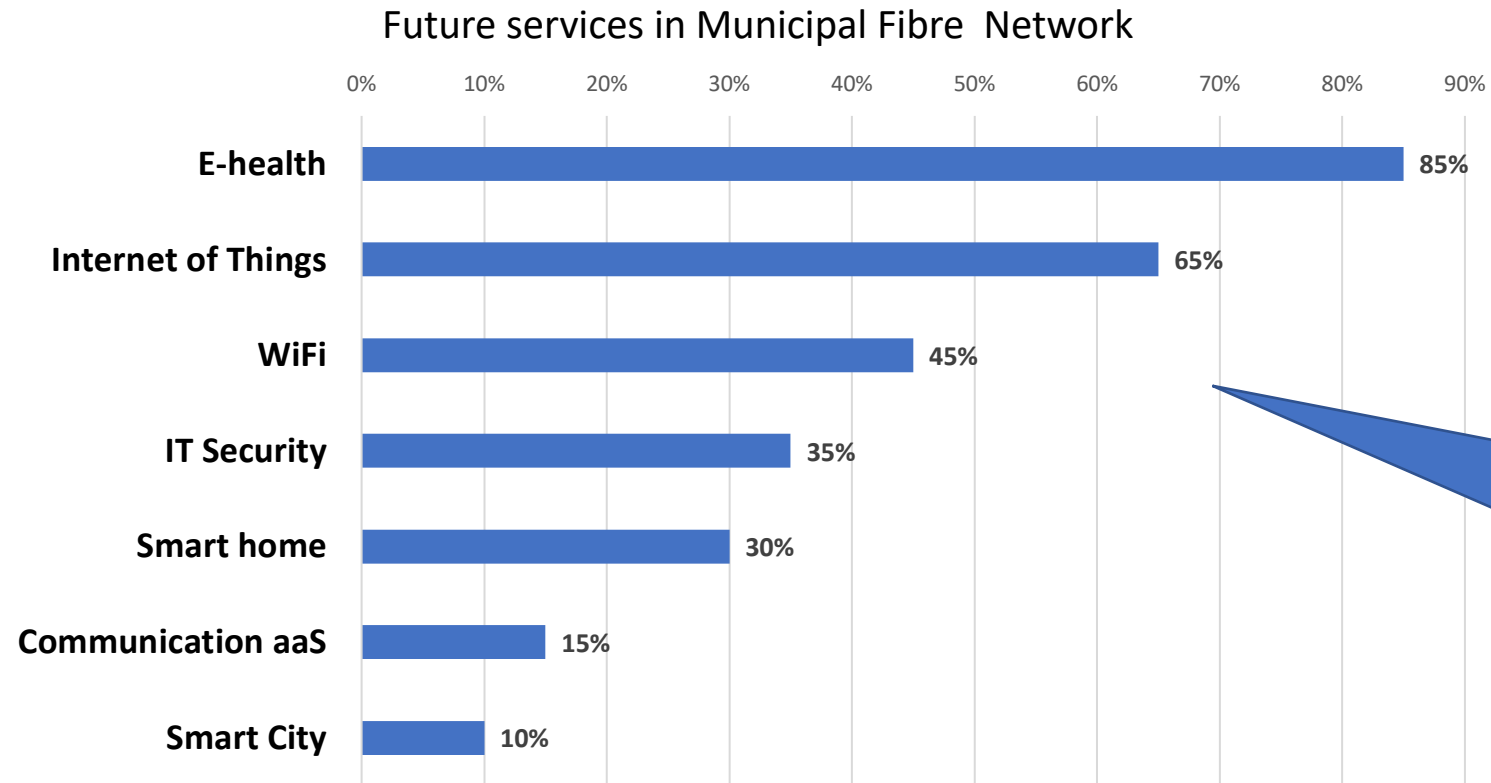
Municipal Fibre Network with communication operator



Customers

- Contradicts its own purpose:
- No equal terms for ISPs
- Municipal Networks are more passive
- Less development in municipality
- Locks out rest of the market:
 - System integrators
 - Software developers
 - Hardware developers
 - Hardware supplier
 - Consultancies

The future services



Future services made available through open Municipal Fibre Networks according to suppliers

Open Networks such as the municipals benefits all!

- Customers
- Companies
- Development
- ISPs
- Operators
- Mobile Networks
- Municipalities
- Sweden



Driver for more available capacity

Let them live, thrive
and operate their
whole network!

Hafsteinn Jonsson

hafsteinn@phaze.se

+46 708544500

